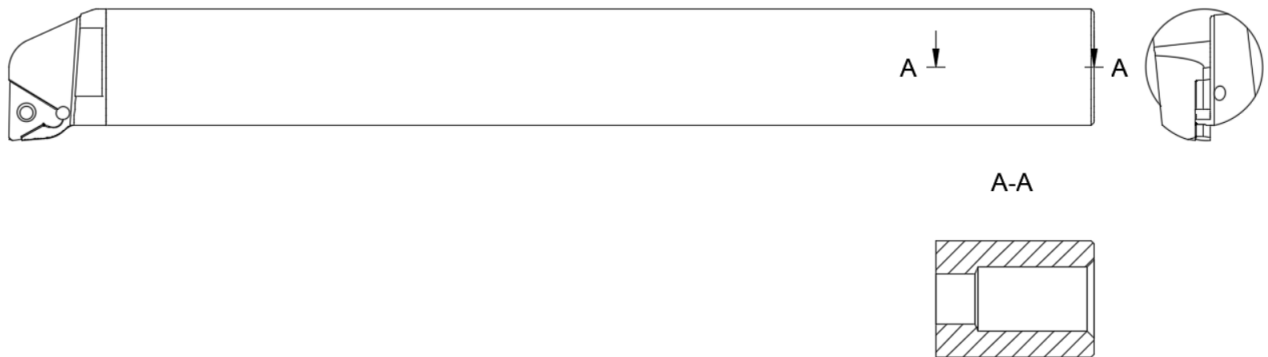


STMD M16-138 STFCR

Vibration damped turning tool holder – Solid Body



MAQ AB

www.maqab.com | info@maqab.com

Order product here

Price and dimensions

More technical data on page 2

Diameter (mm)	Length (mm)	Price USD	Price EUR
16	138	\$ 350	€ 315

Description:

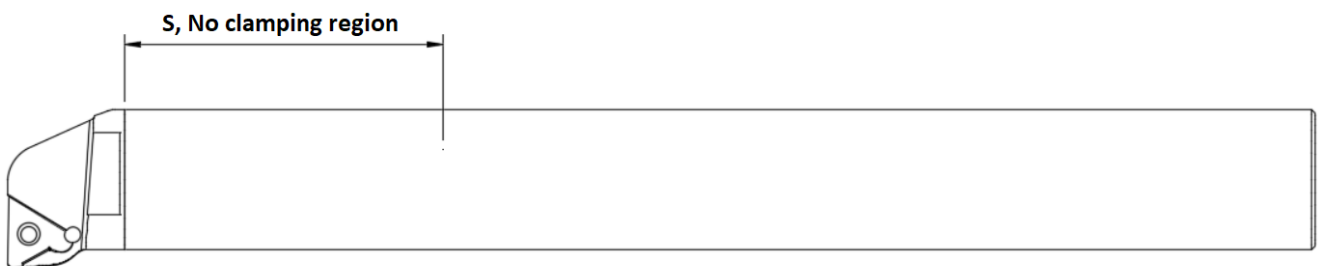
STMD turning tool holder

Supplied with:

insert
Insert key

Note:

Cylindrical shank without clamping feature.
With central groove for alignment.
Recommended application ranges up to 6XD
Reference product performance datasheet
below.
Maximum cutting depth (To be updated) mm.



Download drawing

 STEP




 DWG

Technical data

Adaptive interface machine direction	16 mm
No clamping region (S)	37 mm
Recommended maximum overhang (OHX)	Approx. 96 mm
Coolant entry form	Axial concentric
Coolant exit form	1C – Axial
Coolant entry thread size	G ¼
Max coolant pressure	70 bar
Alignment aid property	Flat surface on cutter head
Connection diameter (DCON)	16 mm
Functional length (LF)	138 mm
Body material	Steel
Weight of item	0.2 kg
Recommended clamping length	48 mm (3XD)
Method of cutting off	Slot turning / Sawing

Quality / Product performance reference*

Depth of cut:	0.5 mm	Nose radius:	0.4 mm
Cutter head:	MAQ SDUCR 16	Cutting insert:	DCMT 070204
Coolant:	On	Workpiece material:	34 CrNiMo, HRC 28-30
Units:	Feed: mm/rev; Speed: m/min; Ra: μm		

		
Quiet with good/medium surface quality	Slight to medium vibrations with medium to bad surface quality	Strong vibrations / Insert broken

Surface finish (Ra) table

4xD DOC = 0.5mm

Speed	Feed		
	0.10	0.15	0.20
200	0.86	1.90	3.35

5xD DOC = 0.5mm

Speed	Feed		
	0.10	0.15	0.20
200	1.04	2.02	3.55

6xD DOC = 0.5mm

Speed	Feed		
	0.10	0.15	0.20
200	1.09	2.11	3.62

(RA) = Arithmetic Average of the roughness profile (μm)

* The actual product performance is dependent on the rigidity of the clamping methods, and the table is used as reference

MAQ AB

www.maqab.com | info@maqab.com

Order product here